

WAX MUSEUM CONDOS  
917 CONTI STREET  
NEW ORLEANS, LA.

THESE PLANS AND SPECIFICATIONS HAVE BEEN PREPARED BY ME OR UNDER MY CLOSE PERSONAL SUPERVISION AND TO THE BEST OF MY KNOWLEDGE AND BELIEF THEY COMPLY WITH ALL CITY, STATE AND FEDERAL REQUIREMENTS, AND I AM NOT PROVIDING CONTRACT ADMINISTRATION.

CERTIFIED CORRECT

THIS DRAWING IS CONFIDENTIAL AND NOT BE LOANED, REPRODUCED, COPIED, EITHER WHOLLY OR IN PART, OR MADE PUBLIC IN ANY MANNER WITHOUT THE WRITTEN CONSENT OF HBSA II ARCHITECTS. A PROFESSIONAL L.L.C. ALL RIGHTS OF DESIGN OR INVENTION ARE RESERVED AND WILL REMAIN THE SOLE PROPERTY OF HBSA II ARCHITECTS A PROFESSIONAL L.L.C.

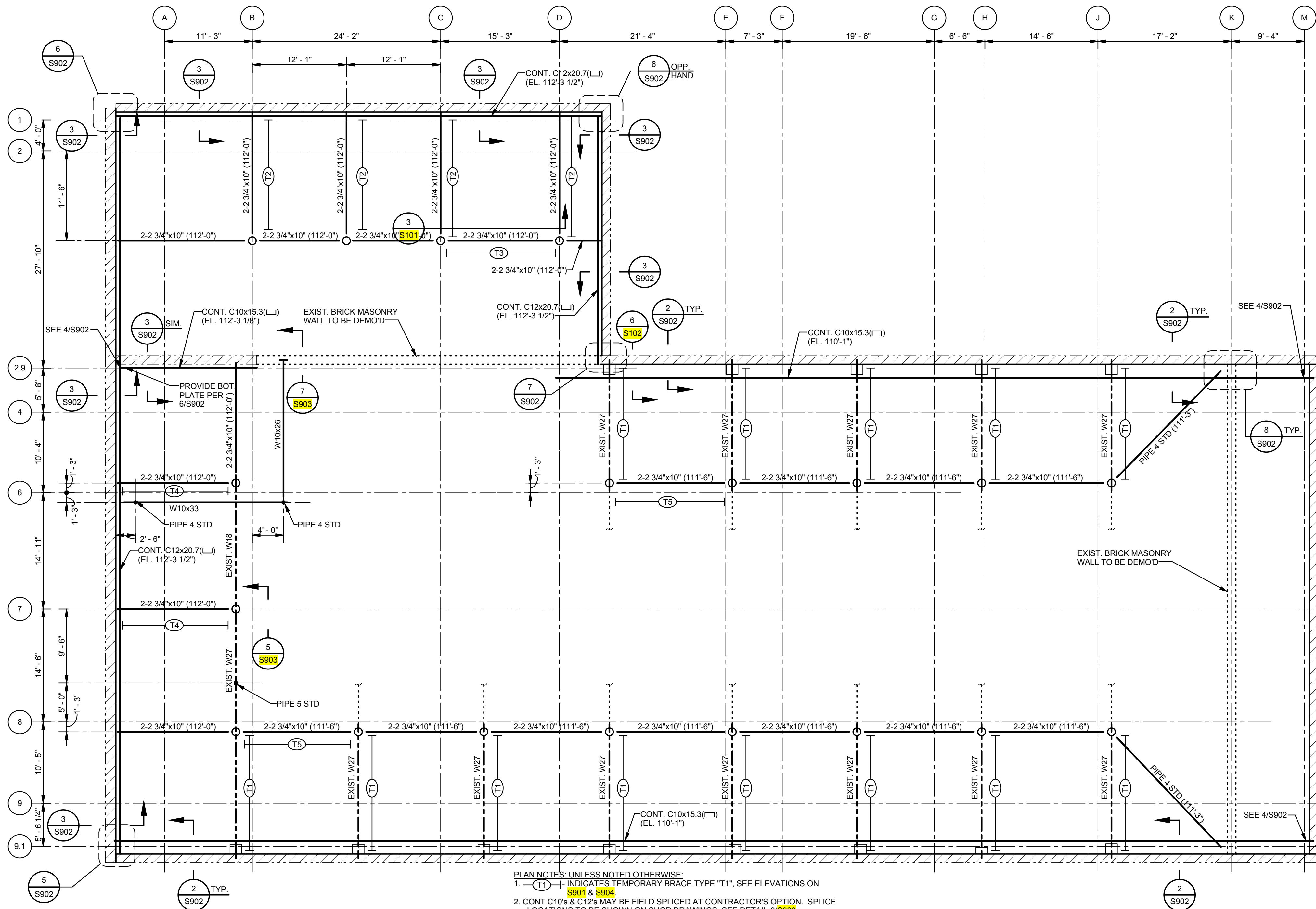
REVISION HISTORY				
NO.	DATE	DESCRIPTION	BY	CHKD.
1	06/20/16	SCHEMATIC DESIGN		
2	07/14/16	DESIGN DEVELOPMENT		
3	08/26/16	FOUNDATION PERMIT SET		
4	09/16/16	PROGRESS SET		
5	09/27/16	PERMIT SET		

SECOND FLOOR  
TEMPORARY SHORING  
PLAN

PROJECT#: 1435  
PHASE: DD  
DRAFTER: Author  
CHECKER: Checker  
SCALE: AS NOTED  
ISSUED: 08-26-16

SHEET#:

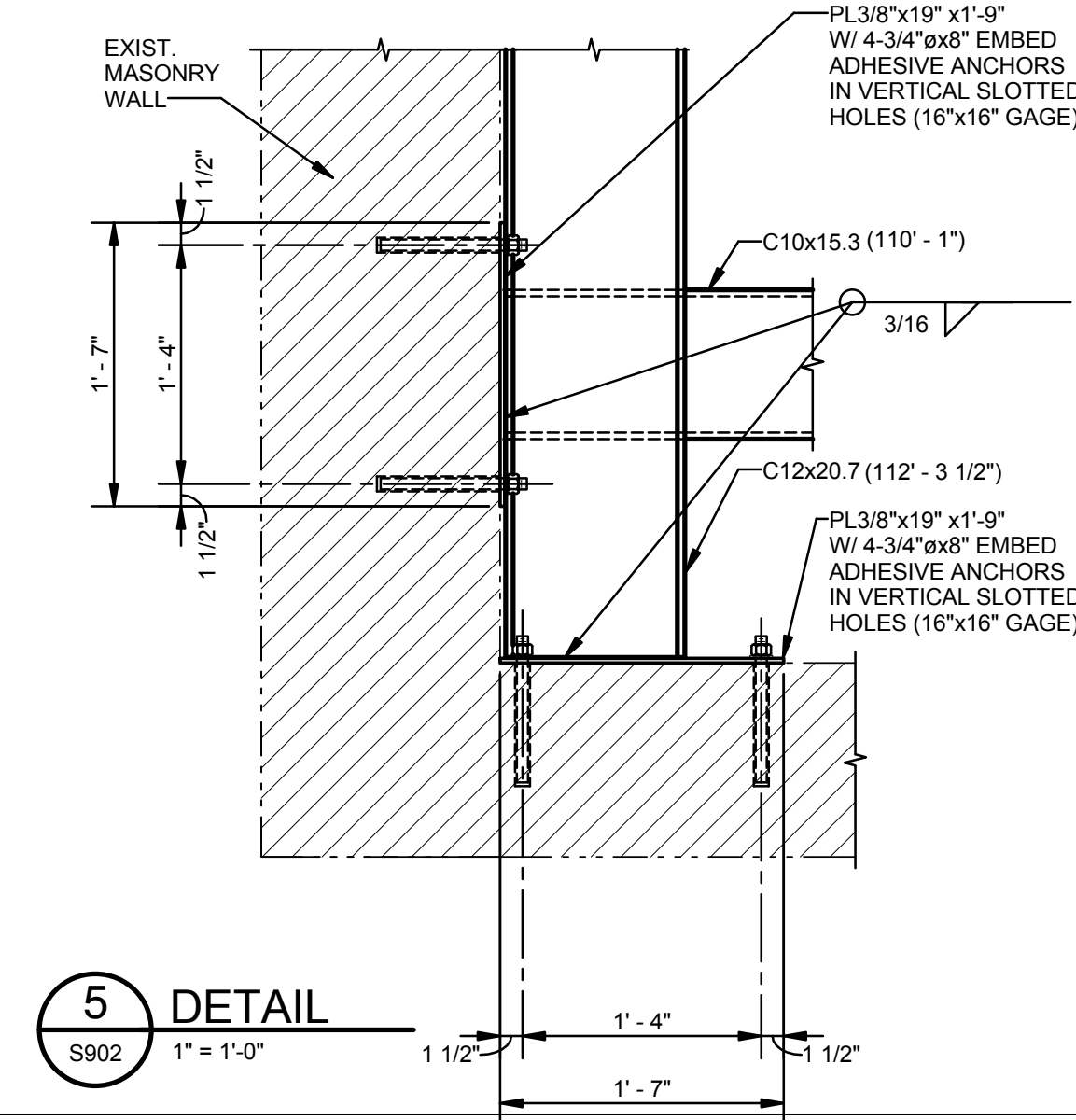
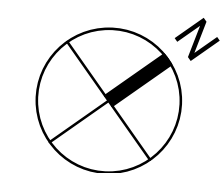
S902



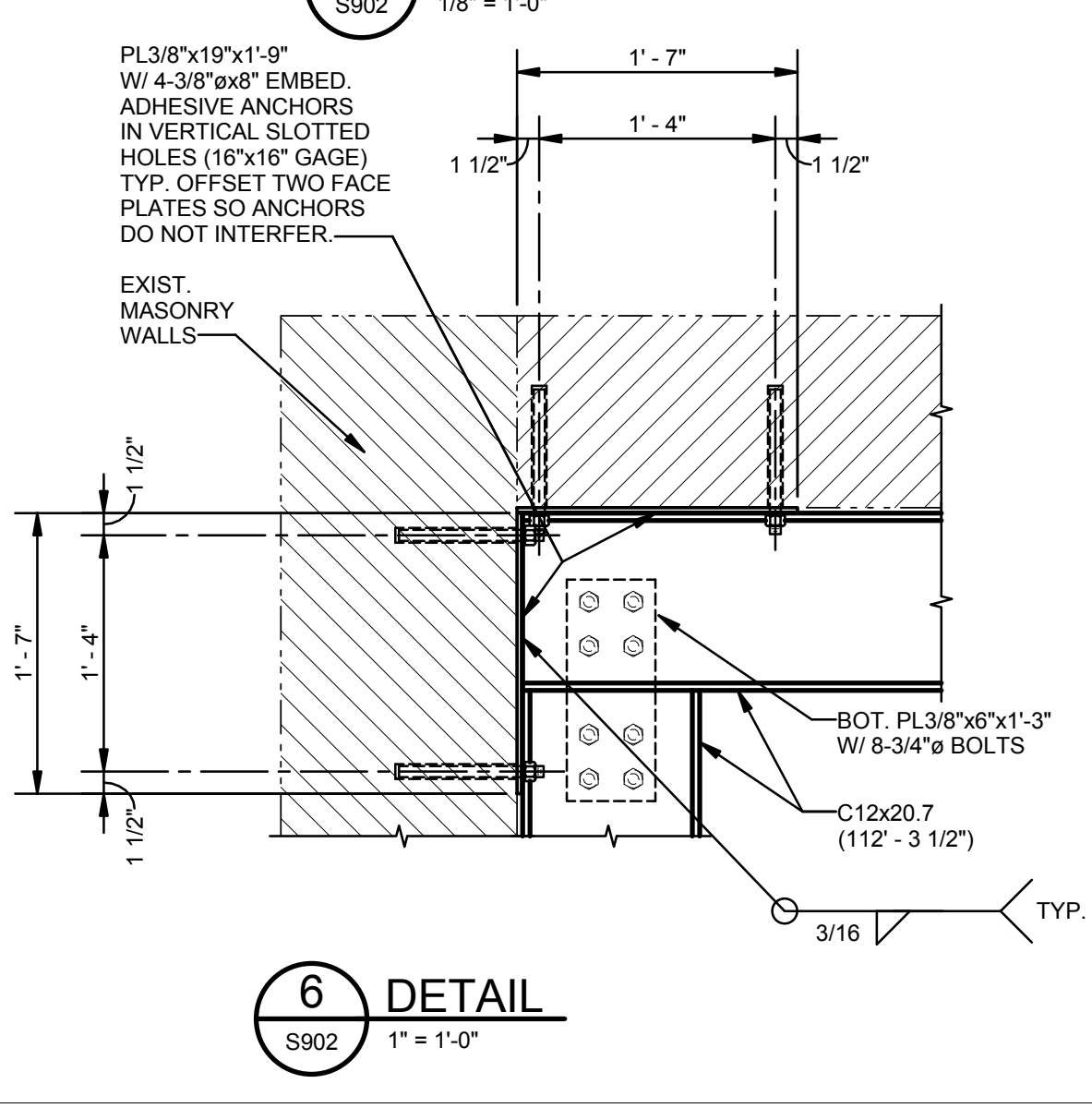
- PLAN NOTES: UNLESS NOTED OTHERWISE:  
1. (T1) - INDICATES TEMPORARY BRACE TYPE "T1", SEE ELEVATIONS ON S901 & S904.  
2. CONT C10s & C12s MAY BE FIELD SPICED AT CONTRACTOR'S OPTION. SPLICE LOCATIONS TO BE SHOWN ON SHOP DRAWINGS. SEE DETAIL 3 S903.  
3. IT WILL BE ACCEPTABLE TO SUBSTITUTE 4-1 1/2"x10" FOR 2-2 3/4"x10" WOOD MEMBERS.

SECOND FLOOR TEMPORARY  
SHORING PLAN

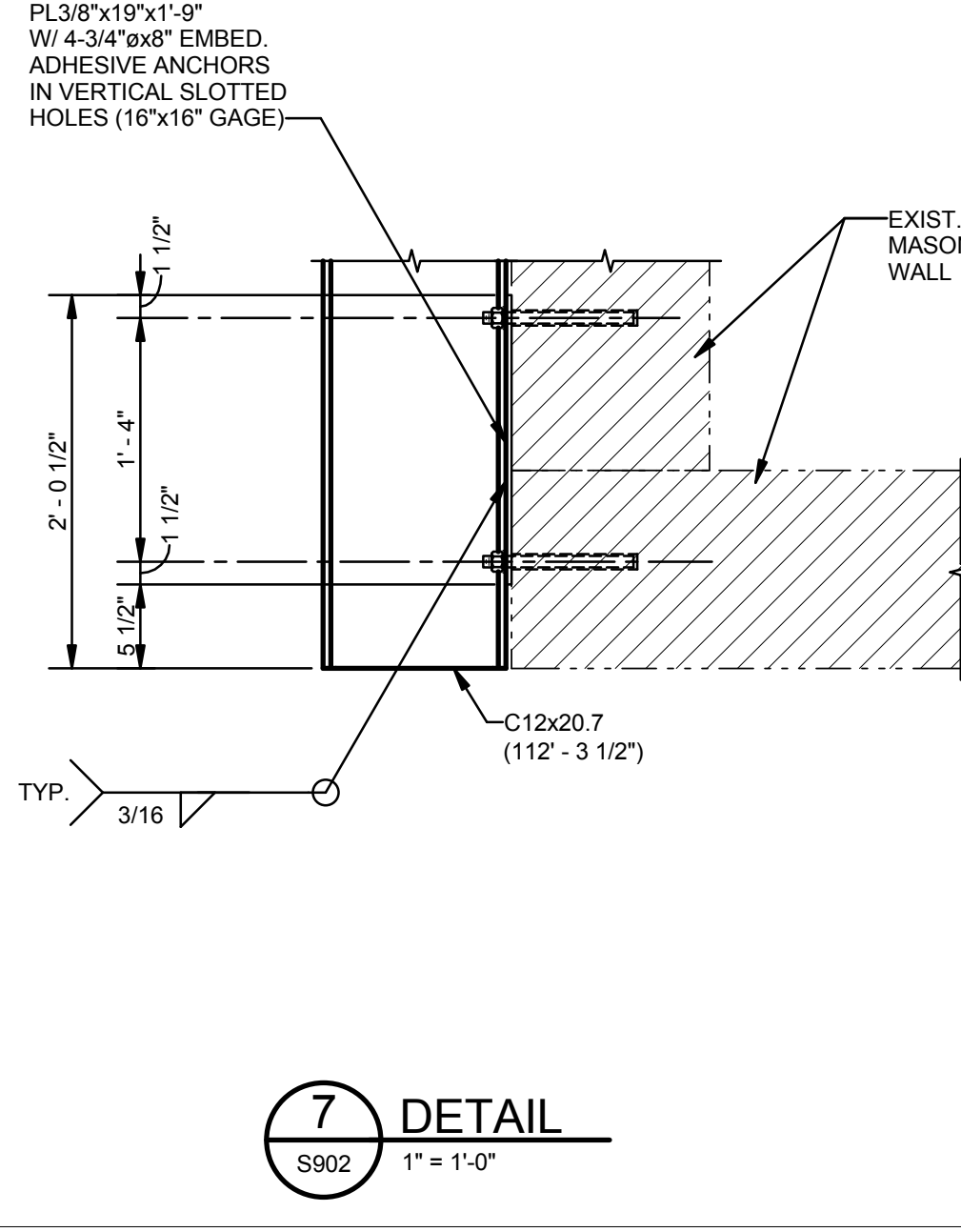
1  
S902  
1/8" = 1'-0"



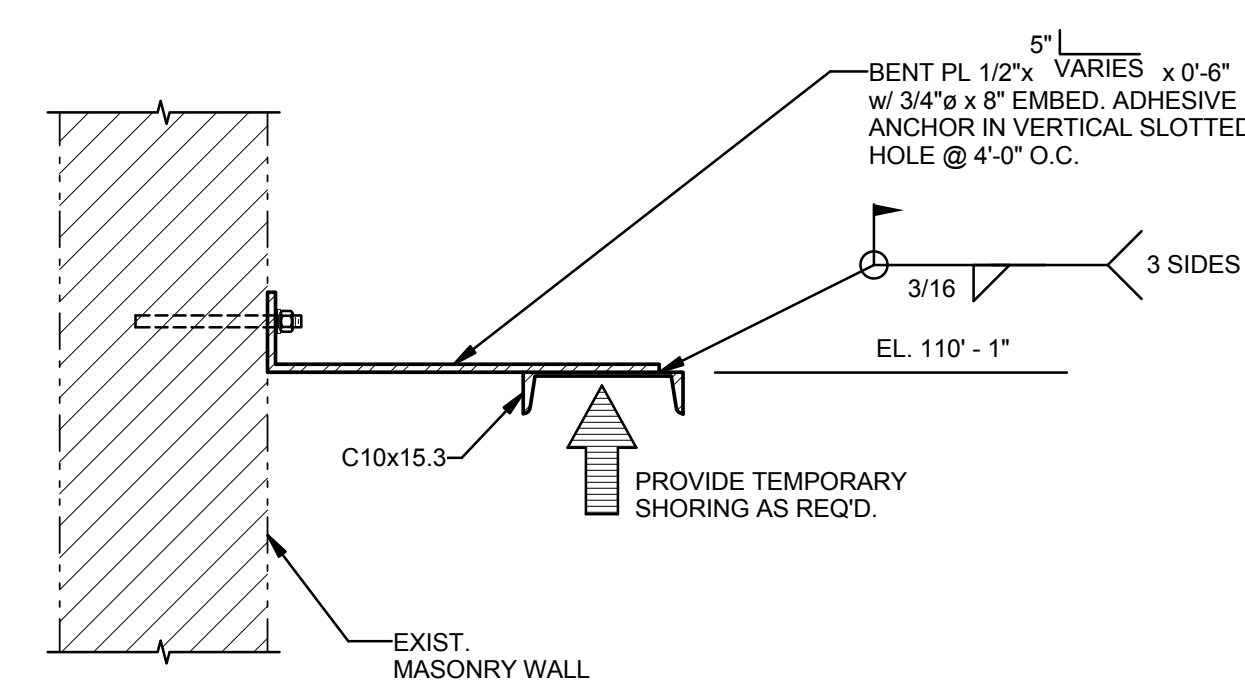
5  
S902  
1" = 1'-0"



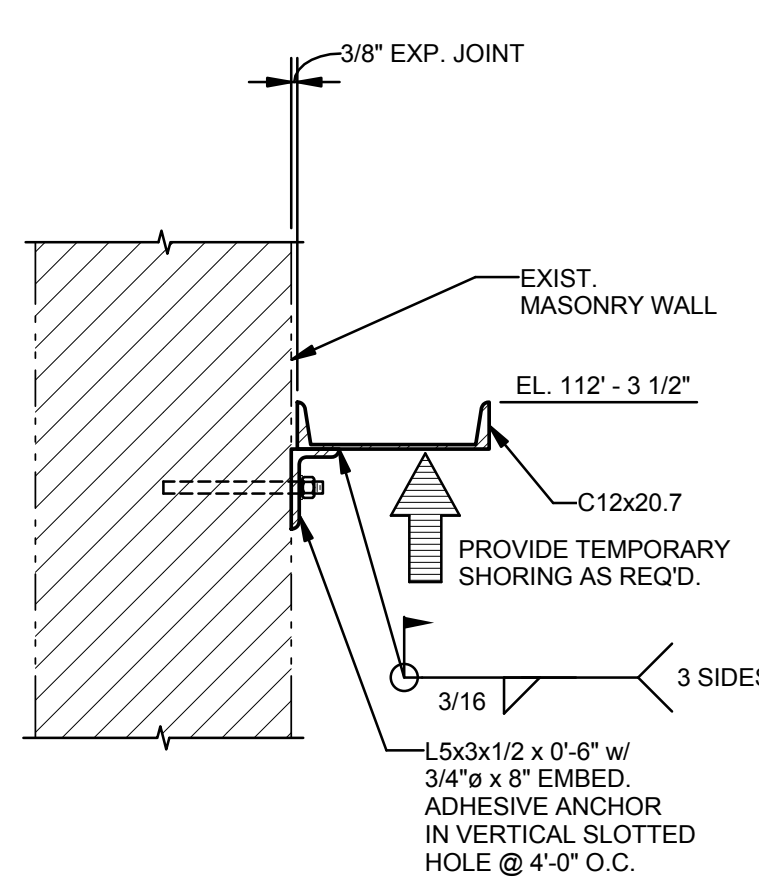
6  
S902  
1" = 1'-0"



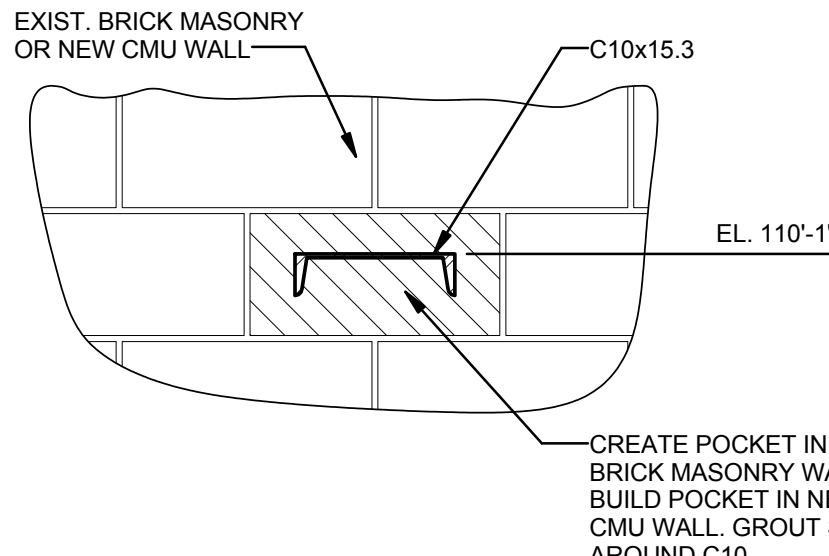
7  
S902  
1" = 1'-0"



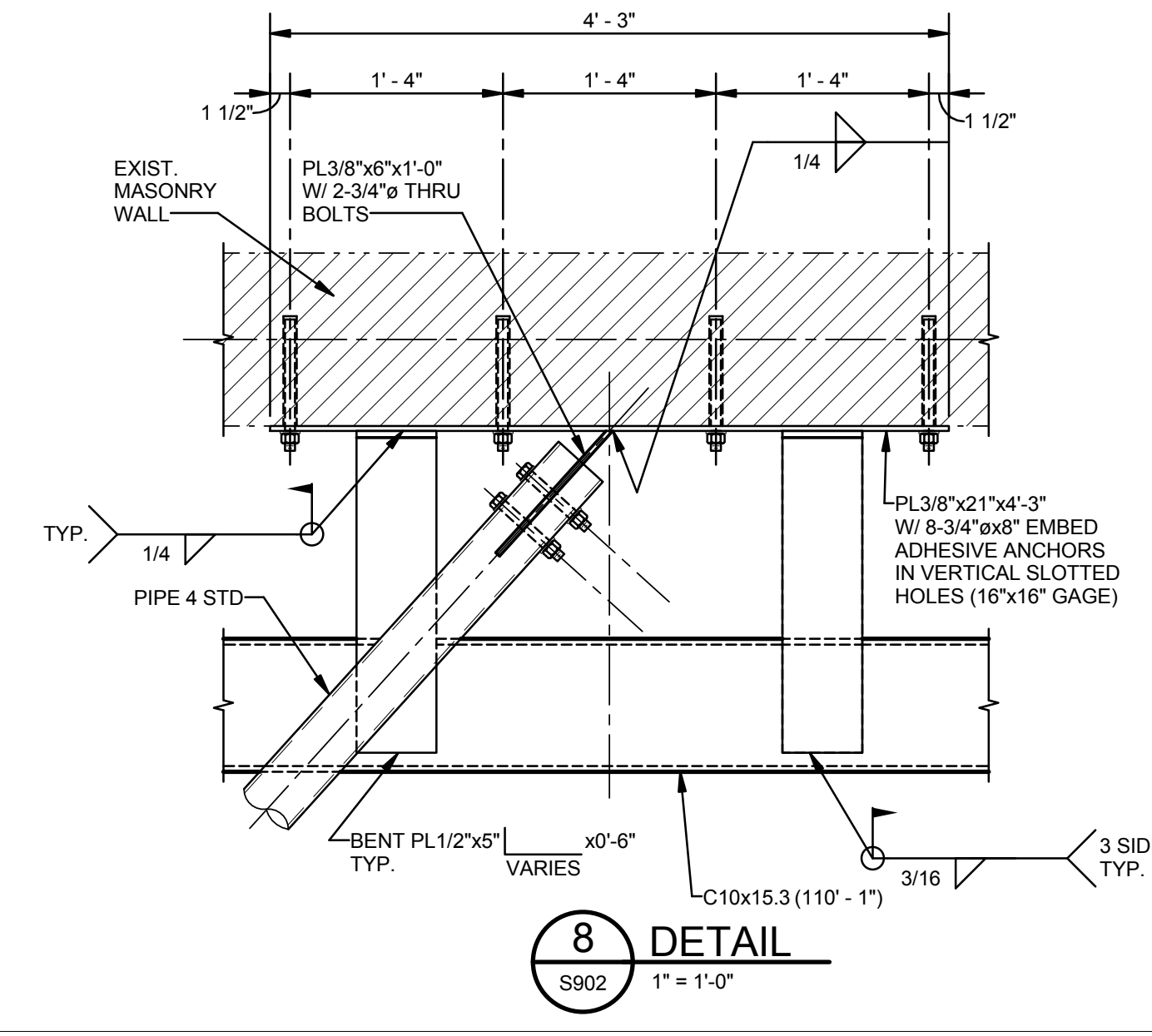
2  
S902  
1" = 1'-0"



3  
S902  
1" = 1'-0"



4  
S902  
1" = 1'-0"



8  
S902  
1" = 1'-0"